

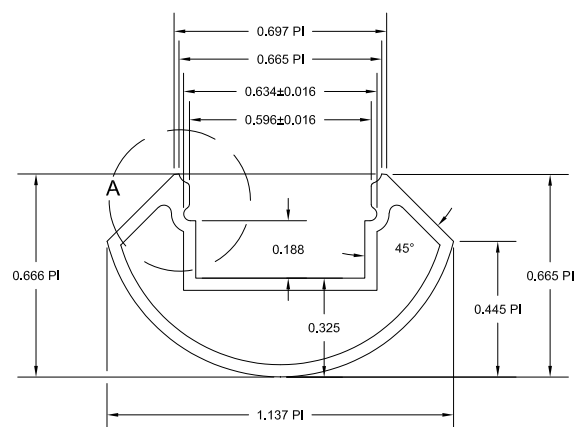
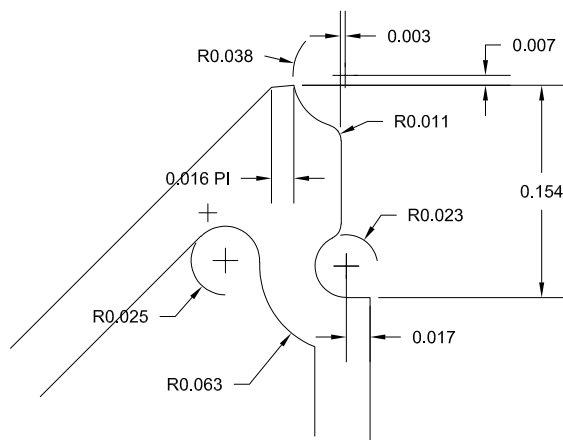
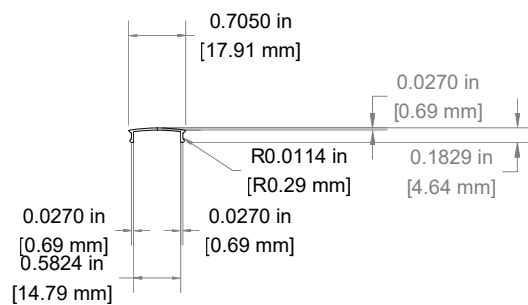
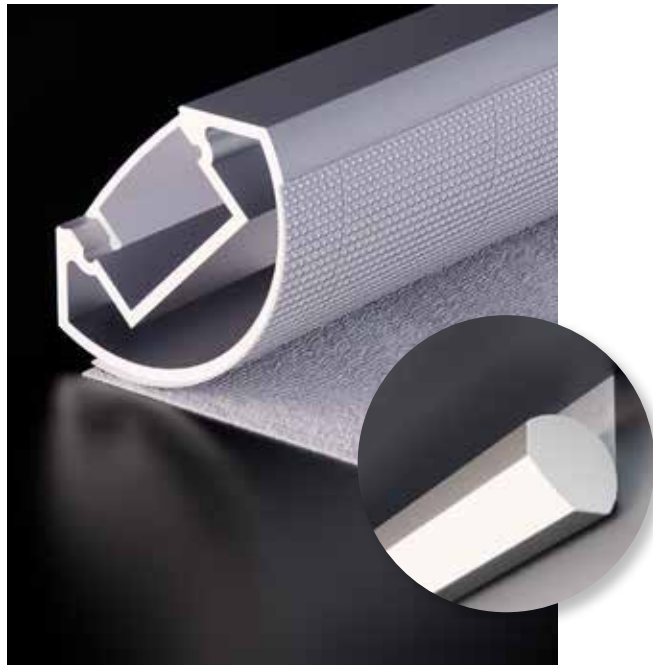
Specification Sheet

ST- Led Channel 6

The Spidertech round adjustable aluminum LED Channel # 6 offers versatile lighting with a sleek design, allowing you to direct the light exactly where it's needed. Key features include:

- Material: High-grade aluminum for superior heat dissipation and durability.
- Round design: A modern, cylindrical shape that allows for flexible lighting direction, perfect for accent lighting and focused illumination.
- Adjustable lighting: Easily direct the light in any direction to suit the needs of your space.
- Integrated Hook & Loop system: Equipped with a Hook & Loop system for simple and tool-free installation.
- Easy maintenance: The channel can be removed and repositioned with ease, making it ideal for hard-to-reach places.
- Compatibility: Designed to work with all standard LED strips.
- Enhanced light control¹**: The round profile provides focused light diffusion, offering versatility in both ambient and task lighting.

This round LED Channel is perfect for projects requiring adaptable lighting solutions with a clean, professional finish.



STRAIGHTNESS: .0125 PER FOOT TWIST: 1° PER FOOT, 7° TOTAL FLATNESS: .004 PER INCH

UNMARKED WALLS: .040	UNMARKED CORNERS: .010	CLASS: HOLLOW	MATERIAL: ALUM
----------------------	------------------------	---------------	----------------

UNLESS OTHERWISE NOTED ALL DIMENSIONS WILL CONFORM TO THE ALUMINUM ASSOCIATION PUBLISHED STANDARDS

AREA	.139	SQ.IN	<div>X.XXX</div> DENOTES CRITICAL DIMENSION
WT/FT.	.167	LBS.	
PERIM:	6.604	IN.	
FACTOR	40		
C.C.D.	1.2	IN.	<div>X</div> DENOTES QUALITY DIMENSION CHECK